

READY TO MOVE UP?

If this is your first home, second home, or the home you plan to retire to, we can help. We offer affordable, innovative financing to fit every credit worthy buyer, including FHA, VA, Rural Development and KHC loans.

CREDIT PROBLEMS? We'll show you how to fix them! With thirty years of experience behind us, we are continually exploring better paths to homeownership.

Call us today at:
(606) 784-2131
or (606) 743-9691

Frontier Housing, let us be part of your housing solution.



42 Cady Drive
Morehead, KY 40351

Frontier Housing, Inc.

Frontier serves Bath, Carter, Elliott, Fleming, Magoffin, Menifee, Morgan, Rowan, & Wolfe Counties

Frontier Housing, Inc.



Introducing...

Buttermilk Branch

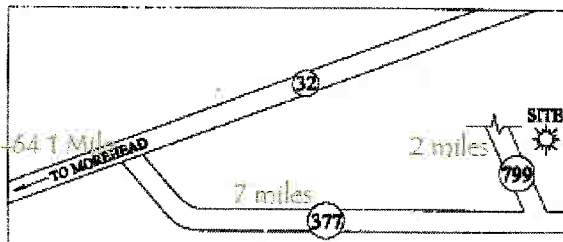
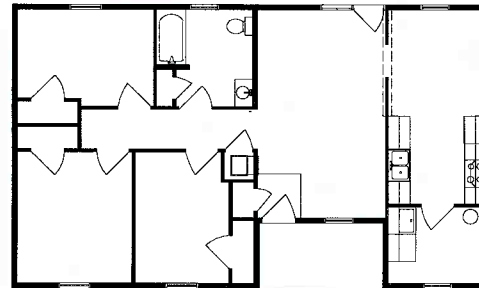
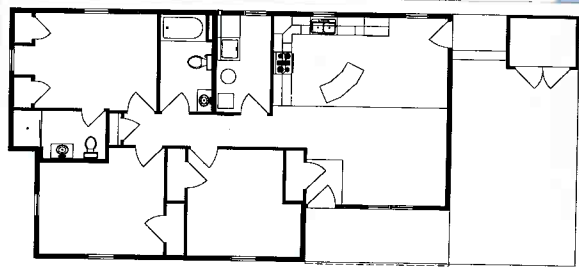
Rowan County's Newest
Planned Community!

15 Homes with up to 1,300
square feet

Prices starting at \$95,000

Providing Affordable
Housing Solutions to Build
Better Communities

Buttermilk Branch Subdivision



VICINITY MAP
ROWAN CO., KY.
(NOT TO SCALE)



EQUAL HOUSING
OPPORTUNITY



WHY CHOOSE BUTTERMILK BRANCH?

- * Blacktopped streets & drives
- * Subdivision Restrictions
- * Environmentally friendly development with minimum tree removal

Only...

- * 2 minutes to 377 Volunteer Fire Department
- * 3 minutes to Tilden Hogge Elementary
- * 10 minutes to city limits & I-64 access

